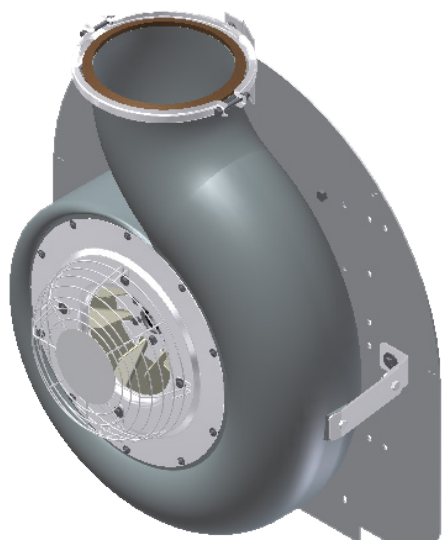


BTA-400

Top performing air unit with blower housing made of polyethylene by progressive development with 10.100 m³/h as highest flow rate.



REFERENCE



Ratio



230.140.240.40	M 1+0	1 / 7,5	Ø400 x 2	1 x Ø225	Polyethylene	3 shoes
230.140.340.40	M 2+0	1 / 7,5 - 1 / 6,5	Ø400 x 2	1 x Ø225	Polyethylene	3 shoes

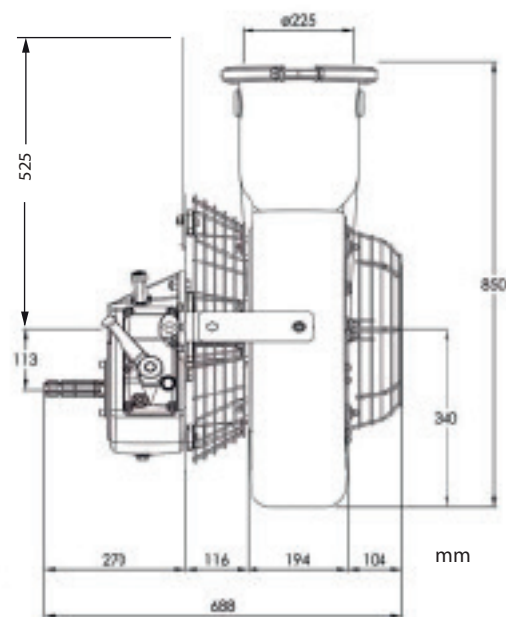
Gear box with aluminium case and helicoidal gear teeth, 1 or 2 speeds + neutral point.

ø400 mm centrifugal injected and balanced **double fan.**

ø225 universal **exit.** and progressive shoes of smooth starting.

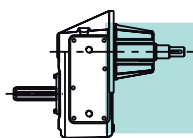
Protective grids on suction exits according to ISO-EN rules.

PERFORMANCE BOARD					
Gear box speed		1:6,5		1:7,5	
		I		II	
r.p.m					
400	m ³ /h	7.300		8.800	
	m/s	49		53	
	hp kW	12 9	14 10		
500	m ³ /h	7.900		9.400	
	m/s	55		60	
	hp kW	15 11	18 13		
540	m ³ /h	8.700		10.100	
	m/s	60		65	
	hp kW	20 15	23 17		

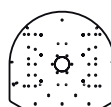


- **Reduction of phytosanitary product**
- **Reduction of power consumption by tractor**
- **Deepest penetration**
- **Proportional distribution**
- **Minimal drift**

*CLAMPS' SET INCLUDED



1-3/8" Z6 male (M) inlet shaft by default. Specify when female inlet is needed.



MAIN FRAME PLATE FOR TRAILED EQUIPMENT

AVAILABLE WITH HYDRAULIC ENGINE